

SHEET NOTES

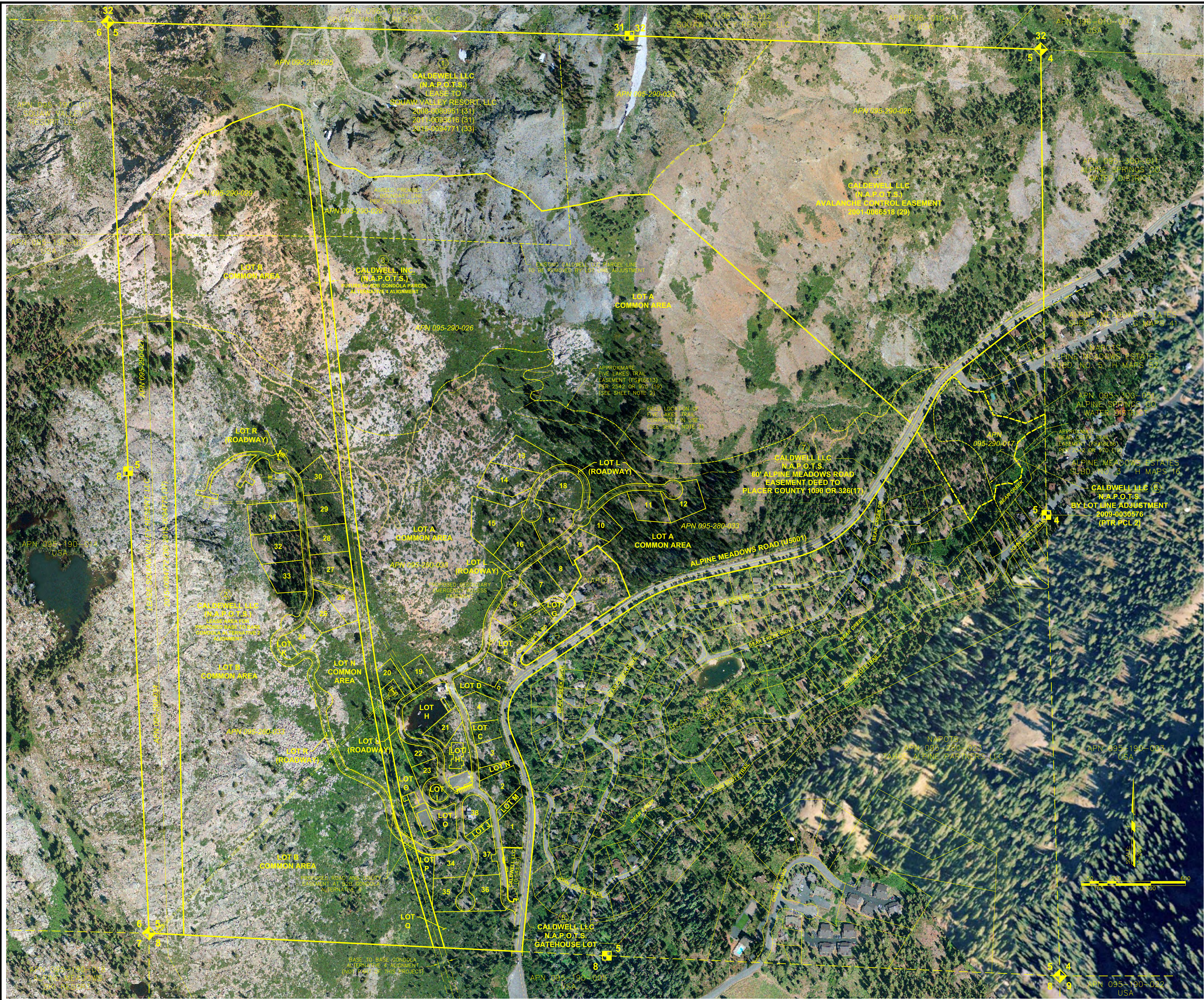
1. THE DESCRIPTION GIVEN FOR THE RECORD LOCATION OF THE U.S. FOREST SERVICE FIVE LAKES TRAIL (16E13) AND THE BEAR CREEK TRAIL (16E06) IN DOCUMENT 2542 OR 970 IS VERY VAGUE. THE LOCATION OF THE ALIGNMENTS SHOWN HEREON FOR THESE TRAILS IS APPROXIMATE ONLY AND CANNOT BE USED FOR CONSTRUCTION OR BOUNDARY PURPOSES.
2. THE ALIGNMENT SHOWN HEREON FOR THE FIVE LAKES TRAIL CURRENTLY IN USE IS TAKEN FROM FIELD OBSERVATION AND AERIAL PHOTOGRAPHY. THIS ALIGNMENT HAS NOT BEEN SURVEYED AND LACKS A WELL DEFINED, DIMENSIONED DESCRIPTION.

LEGEND

- (00) PLACER TITLE CO. PRELIMINARY TITLE REPORT P-258954 EXCEPTION NUMBER (DATED 02-26-18)
- NAPOTS NOT A PART OF THIS SUBDIVISION
- PTR PRELIMINARY TITLE REPORT
- PCL PARCEL

AREAS WITH OWNERSHIP TO BE RETAINED BY CALDWELL LLC

1. KT-22 LEASE AREA TO SQUAW VALLEY RESORT, LLC (APN 095-290-025)
2. BASE TO BASE GONDOLA ALT. 2 LEASE AREA TO SQUAW VALLEY RESORT, LLC (APN 095-280-028, AND APN 095-280-034)
3. BASE TO BASE GONDOLA ALT. 4 60' WIDE GONDOLA PARCEL
4. AVALANCHE CONTROL EASEMENT AREA (APN 095-290-026)
5. PROPOSED GATE HOUSE LOT
6. CALDWELL LLC LANDS SOUTHEAST OF ALPINE MEADOWS ROAD - TO BE REMOVED FROM WHITE WOLF SUBDIVISION BY LOT LINE ADJUSTMENT (APN 095-290-017)
7. CALDWELL LLC - 80' ALPINE MEADOWS ROAD PLACER COUNTY HAS EASEMENT FOR PUBLIC HIGHWAY OR STREET PER DEED 1091 OR 326



SEAL	AGENCY REVIEW
Project TROY CALDWELL WHITE WOLF SUBDIVISION & SKI RESORT	Drawn By TB
	Checked By DM
	Project No. 15-360
	© 2017
	NOVEMBER 2018
	DRAWING NO.
	S-2

NO.	DATE	ISSUE
1	04-06-18	FIRST S-2 TENT MAP RELEASE
2	08-08-18	SECOND S-2 TENT MAP RELEASE
3	10-08-18	THIRD S-2 TENT MAP RELEASE
4	11-02-18	FOURTH S-2 TENT MAP RELEASE
5	11-21-18	FIFTH S-2 TENT MAP RELEASE
6	02-19-19	SIXTH S-2 TENT MAP RELEASE
7	02-27-19	SEVENTH S-2 TENT MAP RELEASE
8	03-08-19	EIGHTH S-2 TENT MAP RELEASE

N:\ANDREGG\1389508\Draw\1389508-TM-Brdy SHS-1.dwg 03/08/19 3:06:27pm 200 tim.barr